

TRUE ORIGIN HIGH OUTPUT

Tilt & Rotate

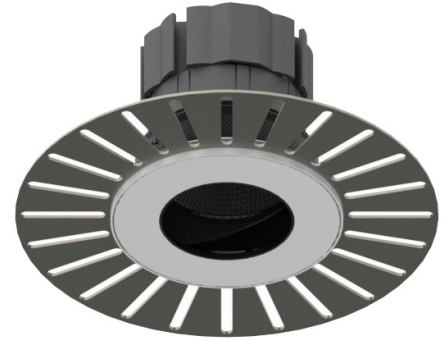
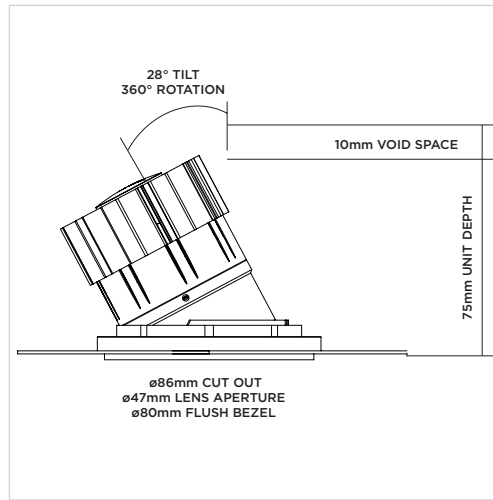
ORLUNA®

Project Reference: _____

Product Reference: _____

Luminaire Details

| | |
|--------------|----------------------------|
| Fitting Type | Adjustable Downlight |
| IP Rating | IP54 |
| Warranty | 5 Years |
| Class | III |
| IP Zone | Zone 1 |
| Standards | CE, BS EN 60598 |
| Material | Aluminium ADC12 |
| Cable type | 2 Core 0.75mm ² |
| Cable Length | 300mm |
| Bezel Temp | F Rated |



Features & Benefits

- TRUE BEAM
- Full beam options
- Black baffle to the front for low glare
- 360° rotate and tilt behind the scenes
- Plaster-in

2700K ORIGIN HIGH OUTPUT 85CRI

3000K ORIGIN HIGH OUTPUT 85CRI

| LIGHT VALUES | MEDIUM | WIDE | * All values are per light engine | MEDIUM | WIDE | |
|--------------------|------------------|------------|-----------------------------------|------------------|----------------|------------|
| Beam Width FWHM | 33° | 42° | | | 33° | 42° |
| Initial Lumens* | 1533 | 1533 | | | 1658 | 1658 |
| Engine Lumens* | 1290 | 1278 | | | 1403 | 1403 |
| *(Tc 85°C, +/-7%) | | | | | | |
| Engine Lm/W | 111 | 110 | | | 121 | 121 |
| Luminaire Cd | 1944 | 1286 | | | 2070 | 1323 |
| Binning SDCM (Hot) | 2 | | | | 2 | |
| DUV | 0.001 | | | | 0.001 | |
| CRI (typ)(R9) | 85 (15) | | | | 85 (10) | |
| TM30 Rf Rg | Rf 85 Rg 95 | | | Rf 83 Rg 95 | | |
| Lifetime (ambient) | L90 B5 50,000hrs | | | L90 B5 50,000hrs | | |

For full test data, see Luminaire Photometric Reports at orluna.com/downloads

LUMINAIRE POWER

| | | |
|---------------------|-------|-------|
| Voltage | 34v | 34v |
| Drive Current | 300mA | 300mA |
| Circuit Power (typ) | 11.6W | 11.6W |

DRIVER

| | |
|-----------------------|------------------------------------|
| Protocols | Mains Dim / DALI / 0-10V / Non-dim |
| Dim to Dark | 0.1% Lux |
| Distance from product | 20m (series wiring) |
| Emergency | Emergency packs available |

Specification Code

| | | | | | | | |
|-------------|--------------|--|--|------------------------|--|---|--|
| Engine type | Bezel | Colour Temp | Driver | Beam Width | Bezel Colour | Baffle Colour | Options |
| HO | -TRU- | 27 | M | M | -W- | BB | F 54 E |
| | | 27 / 2700K 30 / 3000K 40 / 4000K | M / Mains Dim D / DALI O / 0-10v N / Non Dim X / No Driver | M / Medium W / Wide | W / White RAL 9010 D / White RAL 9003 E / White RAL 9016 B / Black RAL 9005 F / Antique Brass G / Polished Brass J / Antique Bronze K / Brushed Chrome L / Polished Chrome H / Antique Copper I / Polished Copper C / Other RAL | BB / Black WB / White RAL 9010 GB / Gold CB / Other RAL | F / Fire Rated 54 / IP54 65 / IP65 P / Sea & Spa T / Lockable Tilt & Rotate E / 3hr Emergency H / Honeycomb S / Spreader Lens N / Frosted Lens Z / LSZH Cable |

ORLUNA LED Technologies
Unit C, Holly Industrial Park,
Ryan Way, Watford
Herts WD24 4YP

info@orluna.com

+44 (0) 1923 889 712

03/20/18