

# TRUE ORIGIN

## Tilt & Rotate

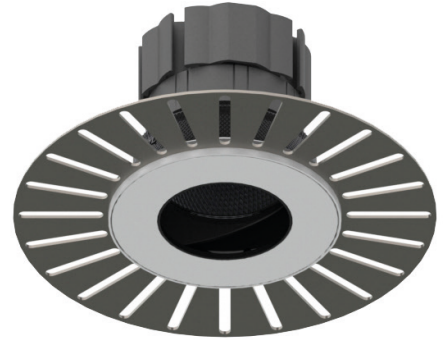
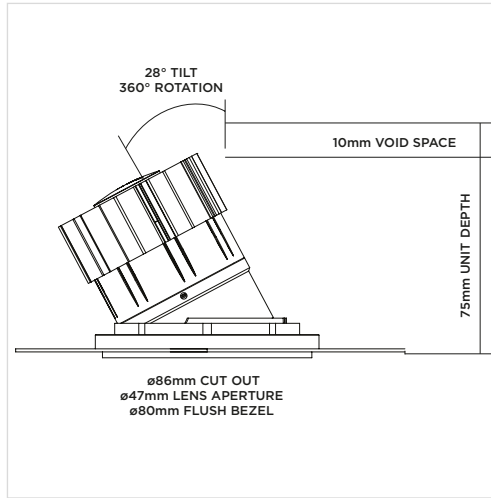
# ORLUNA®

Project Reference: \_\_\_\_\_

Product Reference: \_\_\_\_\_

### Luminaire Details

Fitting Type	Adjustable Downlight
IP Rating	IP54
Warranty	5 Years
Class	III
IP Zone	Zone 1
Standards	CE, BS EN 60598
Material	Aluminium ADC12
Cable type	2 Core 0.75mm <sup>2</sup>
Cable Length	300mm
Bezel Temp	F Rated



### Features & Benefits

- 98CRI R9 99
- TRUE BEAM
- Full beam options
- Black baffle to the front for low glare
- 360° rotate and tilt behind the scenes
- Plaster-in

### 2700K ORIGIN 98CRI

### 3000K ORIGIN 98CRI

LIGHT VALUES	SPOT	MEDIUM	WIDE	FLOOD	SPOT	MEDIUM	WIDE	FLOOD
<b>Beam Width FWHM</b>	<b>10°</b>	<b>27°</b>	<b>39°</b>	<b>45°</b>	<b>10°</b>	<b>27°</b>	<b>40°</b>	<b>45°</b>
Initial Lumens*	624	1077	1077	1077	661	1156	1156	1156
Engine Lumens*	437	931	931	924	455	954	984	978
<small>*(Tc 85°C, +/-7%)</small>								
Engine Lm/W	41	80	80	80	43	82	85	84
Luminaire Cd	4853	1748	1020	923	5075	1792	965	959
Binning SDCM (Hot)	2				2			
DUV	0.001				0.001			
CRI (typ)(R9)	<b>98 (98)</b>				<b>98 (99)</b>			
TM30 Rf Rg	Rf 94 Rg 100				Rf 94 Rg 101			
Lifetime (ambient)	L90 B5 50,000hrs				L90 B5 50,000hrs			

For full test data, see Luminaire Photometric Reports at [orluna.com/downloads](http://orluna.com/downloads)

### LUMINAIRE POWER

	16.8v	34v	16.8v	34v
Voltage	16.8v	34v	16.8v	34v
Drive Current	500mA	300mA	500mA	300mA
Circuit Power (typ)	10.6W	11.6W	10.6W	11.6W

### DRIVER

Protocols	Mains Dim / DALI / 0-10V / Non-dim
Dim to Dark	0.1% Lux
Distance from product	20m (series wiring)
Emergency	Emergency packs available

### Specification Code

Engine type	Bezel	Colour Temp	Driver	Beam Width	Bezel Colour	Baffle Colour	Options
<b>OR</b>	<b>-TRU-</b>	<b>27</b>	<b>M</b>	<b>S</b>	<b>-W-</b>	<b>BB</b>	<b>F 54 E</b>
		27 / 2700K 30 / 3000K 40 / 4000K	M / Mains Dim D / DALI O / 0-10v N / Non Dim X / No Driver	S / Spot M / Medium W / Wide F / Flood	W / White RAL 9010 D / White RAL 9003 E / White RAL 9016 B / Black RAL 9005 F / Antique Brass G / Polished Brass J / Antique Bronze K / Brushed Chrome L / Polished Chrome H / Antique Copper I / Polished Copper C / Other RAL	BB / Black WB / White RAL 9010 GB / Gold CB / Other RAL	F / Fire Rated 54 / IP54 T / Lockable Tilt & Rotate E / 3hr Emergency H / Honeycomb S / Spreader Lens N / Frosted Lens Z / LSZH Cable

ORLUNA LED Technologies  
Unit C, Holly Industrial Park,  
Ryan Way, Watford  
Herts WD24 4YP

info@orluna.com

+44 (0) 1923 889 712