

SHADOWLINE ORIGIN

Detail Tilt & Rotate Twin

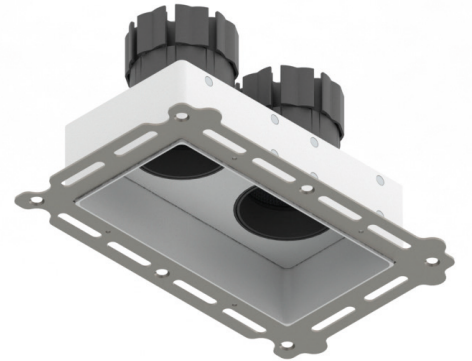
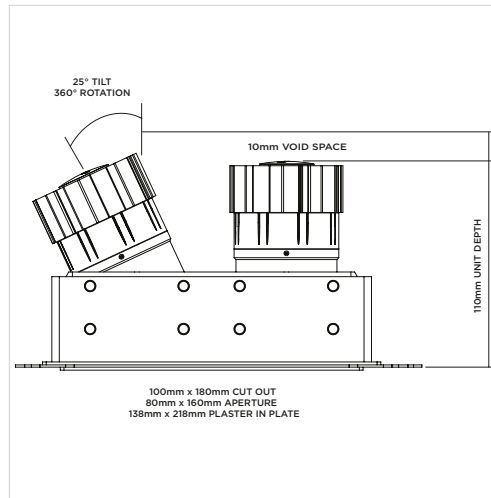
ORLUNA®

Project Reference: _____

Product Reference: _____

Luminaire Details

Fitting Type	Adjustable Downlight
IP Rating	IP54
Warranty	5 Years
Class	III
IP Zone	Zone 1
Standards	CE, BS EN 60598
Material	Aluminium ADC12
Cable type	2 Core 0.75mm ²
Cable Length	300mm
Bezel Temp	F Rated



Features & Benefits

- 98CRI R9 99
- TRUE BEAM
- Full beam options
- Low glare
- Magnetically-retained plaster-in
- Change accessories from the front

2700K ORIGIN 98CRI

3000K ORIGIN 98CRI

LIGHT VALUES	SPOT	MEDIUM	WIDE	FLOOD	* All values are per light engine	SPOT	MEDIUM	WIDE	FLOOD	
Beam Width FWHM	10°	29°	42°	45°		10°	28°	42°	46°	
Initial Lumens*	624	1077	1077	1077		661	1156	1156	1156	
Engine Lumens*	437	931	931	924		455	954	984	978	
*(Tc 85°C, +/-7%)										
Engine Lm/W	41	80	80	80		43	82	85	84	
Luminaire Cd	3554	1612	932	834		3312	1767	991	913	
Binning SDCM (Hot)	2					2				
DUV	0.001					0.001				
CRI (typ)(R9)	98 (98)					98 (99)				
TM30 Rf Rg	Rf 94 Rg 100				Rf 94 Rg 101					
Lifetime (ambient)	L90 B5 50,000hrs				L90 B5 50,000hrs					

For full test data, see Luminaire Photometric Reports at orluna.com/downloads

LUMINAIRE POWER

Voltage	16.8v	34v	16.8v	34v
Drive Current	500mA	300mA	500mA	300mA
Circuit Power (typ)	10.6W	11.6W	10.6W	11.6W

DRIVER

Protocols	Mains Dim / DALI / 0-10V / Non-dim
Dim to Dark	0.1% Lux
Distance from product	20m (series wiring)
Emergency	Emergency packs available

Specification Code

Engine type	Bezel	Colour Temp	Driver	Beam Width	Bezel Colour	Baffle Colour	Options
OR	-SDR2-	27	M	S	- W -	BB	F 54 E
		27 / 2700K 30 / 3000K 40 / 4000K	M / Mains Dim D / DALI O / 0-10v N / Non Dim X / No Driver	S / Spot M / Medium W / Wide F / Flood	W / White RAL 9010 D / White RAL 9003 E / White RAL 9016 B / Black RAL 9005 C / Other RAL	BB / Black WB / White RAL 9010 GB / Gold CB / Other RAL	F / Fire Rated 54 / IP54 T / Lockable Tilt & Rotate E / 3hr Emergency H / Honeycomb S / Spreader Lens N / Frosted Lens Z / LSZH Cable