

Lutron Rania

Control system compatibilty

ORLUNA®

Project Reference: _____

Product Reference: _____

Control System Details

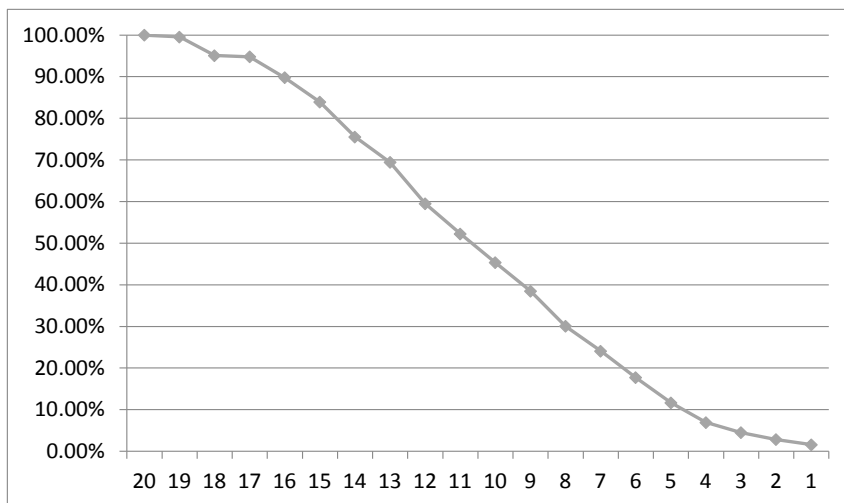
Manufacturer Lutron
 Model Rania RNSU-452B-FAW-M
 Load Range 50 - 450W
 Control Type Adaptive (Leading/Trailing)

Luminaire Details

Engine Origin
 Driver Osram OTe11
 Wattage 11.9W

Summary

Dims to 1.62%
 Minimum 1, maximum 25 lights
 Set to trailing edge
 "Blip mode" on
 Do not recommend other modes



Power Setting	Dim %	Cd
(MAX) 20	100.00%	4317
19	99.56%	4298
18	95.08%	4104
17	94.78%	4092
16	89.79%	3876
15	83.91%	3622
14	75.53%	3261
13	69.43%	2997
12	59.52%	2569
11	52.24%	2255
10	45.33%	1957
9	38.50%	1662
8	30.05%	1297
7	24.10%	1040
6	17.71%	764
5	11.68%	504
4	6.93%	299
3	4.49%	194
2	2.84%	123
(MIN) 1	1.62%	70.1

Min. Luminaires 1
Max. Tested Luminaires 10
Max. Extrapolated Luminaires 25
Waveform Smooth
Flicker None
Audible Noise None above ambient 32dB
Instant Switch-on at Min % 1.62% or Rania dim setting 1

Notes Lutron Rania must be set to trailing edge load (ELV) and Blip be set to Enabled via the control system's Engineering Mode, following the manufacturer's guidelines. Adaptive and MLV modes are not recommended.

Minimum Level



Maximum Level

