

Lutron Homeworks QS

ORLUNA®

Control system compatibility

Project Reference: _____

Product Reference: _____

Control System Details

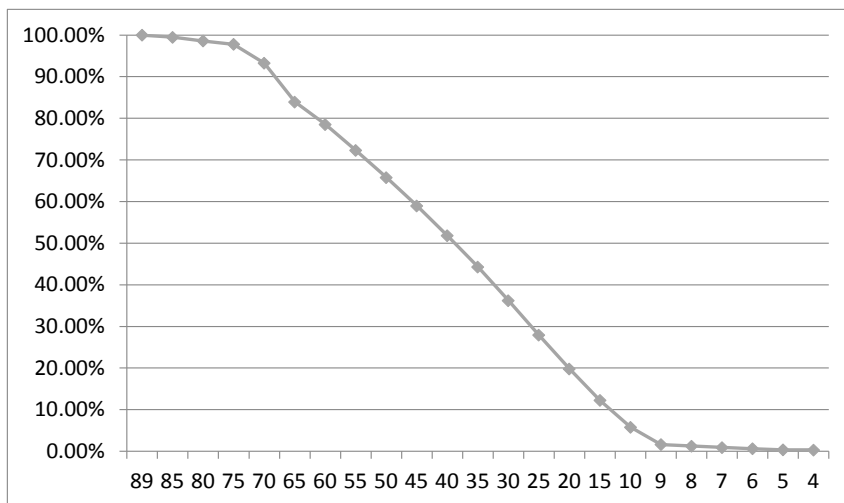
Manufacturer Lutron
 Model Homeworks QS (QSNE-4A-D)
 Load Range 800W/500W/500W/500W
 Control Type Adaptive (Leading/Trailing)

Luminaire Details

Engine Origin
 Driver Osram OTe11
 Wattage 12.4W

Summary

Dims to 0.32%
 Minimum 1, maximum 50 lights
 Set to trailing edge
 Top end trim to 89%
 Bottom end trim to 5%



Power Setting	Dim %	Cd
(MAX) 89	100.00%	4441
85	99.50%	4419
80	98.60%	4379
75	97.79%	4343
70	93.26%	4141
65	83.95%	3728
60	78.53%	3487
55	72.29%	3210
50	65.78%	2921
45	58.99%	2620
40	51.82%	2301
35	44.30%	1967
30	36.24%	1609
25	27.91%	1239
20	19.81%	880
15	12.25%	544
10	5.81%	258
9	1.62%	72
8	1.27%	56
7	0.93%	41
6	0.62%	28
5	0.35%	16
(MIN) 4	0.32%	14

Min. Luminaires 1
Max. Tested Luminaires 10
Max. Extrapolated Luminaires 40 (First Channel)
Waveform Smooth
Flicker None
Audible Noise None above ambient 32dB
Instant Switch-on at Min % 0.35% or Power setting 5%

Notes Lutron Homeworks must be set to trailing edge load (ELV). The top end should be trimmed to 89% and the bottom end should be trimmed to 5%, following the manufacturer's guidelines. Adaptive and MLV modes are not recommended.

Minimum Level



Maximum Level

