

Loxone Universal (T)

ORLUNA®

Control system compatibility

Project Reference: _____

Product Reference: _____

Control System Details

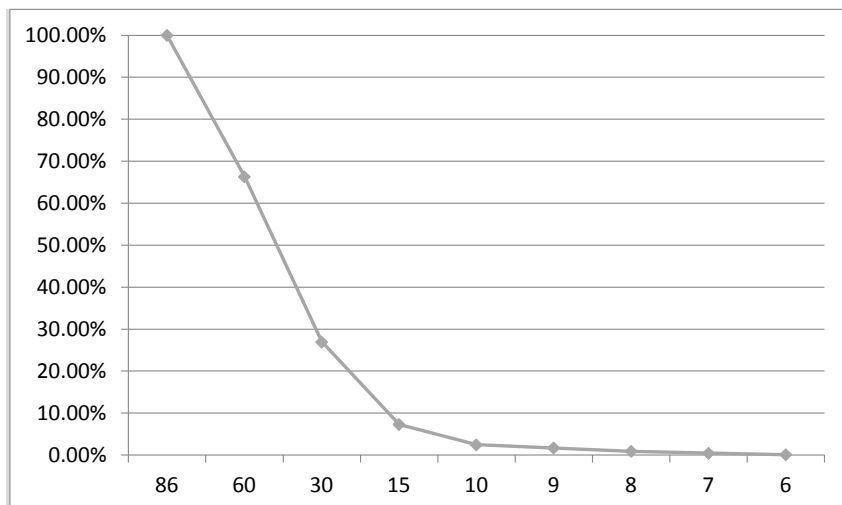
Manufacturer Loxone
 Model Universal
 Load Range 0 - 400W
 Control Type Trailing Edge

Luminaire Details

Engine Origin
 Driver Osram OTe11
 Wattage 12W

Summary

Dims to 0.46%
 Minimum 1, maximum 22 lights
 Trim maximum to 86%
 Trim minimum to 7%



Power Setting	Dim %	Cd
(MAX) 86	100.00%	1752
60	66.32%	1162
30	26.94%	472
15	7.31%	128
10	2.48%	43.5
9	1.71%	30
8	0.91%	16
(MIN) 7	0.46%	8
6	0.11%	2

Min. Luminaires 1
 Max. Tested Luminaires 10
 Max. Extrapolated Luminaires 22
 Waveform Smooth
 Flicker None above 6% power
 Audible Noise 0dB above ambient 32dB
 Instant Switch-on at Min % 0.46% light, Power Setting 7

Notes Trailing Edge test. Trim maximum to 86%. Trim minimum to 7% to avoid flicker at lower levels.

Minimum Level



Maximum Level

