

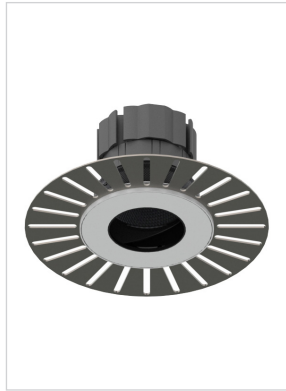
TRUE ORIGIN HIGH OUTPUT

Tilt & Rotate

ORLUNA®

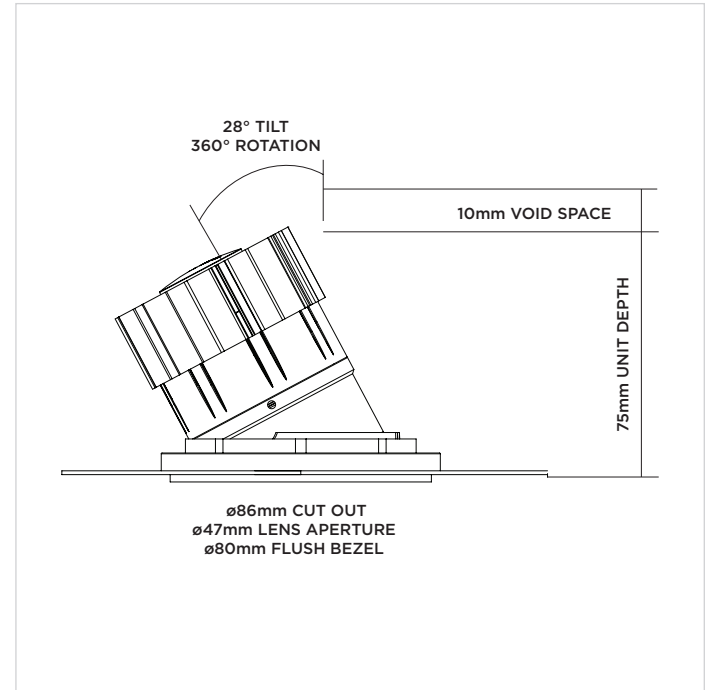
Luminaire Details

Cut-out	Ø86mm
Recess Depth	85mm
Clearance	Ø250mm
Fixing Method	Plaster-in
Min Ceiling Thickness	5mm
Max Ceiling Thickness	28mm
Max Driver Distance	20m
Class	III
IP Rating	IP54
IP Zone	Zone 1
Material	Aluminium ADC12
Cable type	2 Core 0.75mm ²
Cable Length	300mm
Bezel Temp	F Rated



How to Install

- Cut hole in ceiling as per above cut-out;
- Affix the plaster-in plate to the ceiling using appropriate screws, then cover using the supplied plaster-in cover;
- Plaster over the plaster-in plate to the plate lip, and paint as appropriate to ensure the plaster-in plate is suitably hidden;
- Wire luminaire cable to OrLuna certified driver, ensuring correct polarity (red to positive terminal [+], and black to negative terminal [-]);
- With mains supply switched off, connect driver to mains supply (to avoid damaging the luminaire, do not hot-wire);
- Feed luminaire into plaster-in plate, ensuring Ø250mm around luminaire and driver is left clear of insulation.



ORLUNA[®]

Installation Instructions