

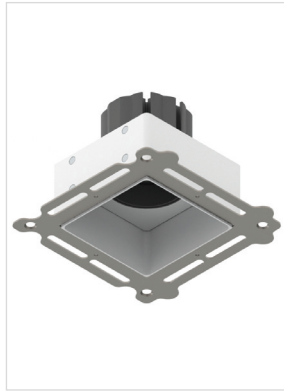
SHADOWLINE DETAIL ORIGIN LOPRO

Tilt & Rotate

ORLUNA®

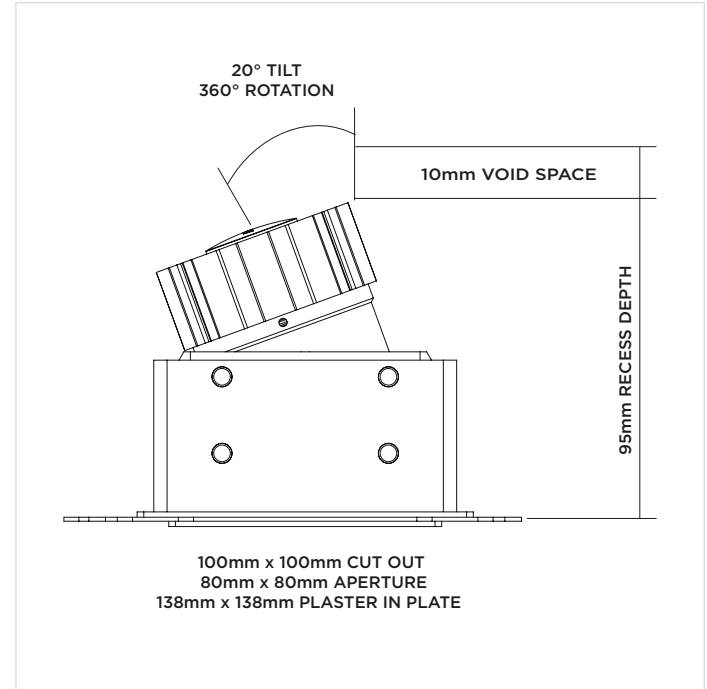
Luminaire Details

| | |
|-----------------------|----------------------------|
| Cut-out | 100mm x 100mm |
| Recess Depth | 105mm |
| Clearance | Ø250mm |
| Fixing Method | Plaster-in |
| Min Ceiling Thickness | 5mm |
| Max Ceiling Thickness | 28mm |
| Max Driver Distance | 20m |
| Class | III |
| IP Rating | IP54 |
| IP Zone | Zone 1 |
| Material | Aluminium ADC12 |
| Cable type | 2 Core 0.75mm ² |
| Cable Length | 300mm |
| Bezel Temp | F Rated |



How to Install

- Cut hole in ceiling as per above cut-out;
- Wire luminaire cable to OrLuna certified driver, ensuring correct polarity (red to positive terminal [+] and black to negative terminal [-]);
- With mains supply switched off, connect driver to mains supply (to avoid damaging the luminaire, do not hot-wire);
- Feed luminaire into cut-out, ensuring Ø250mm around luminaire and driver is left clear of insulation.



10/11/17

ORLUNA[®]

Installation Instructions