

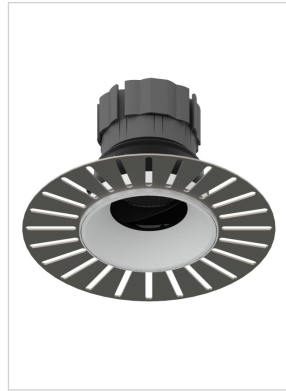
# FADE ORIGIN HIGH OUTPUT

## Tilt & Rotate

# ORLUNA®

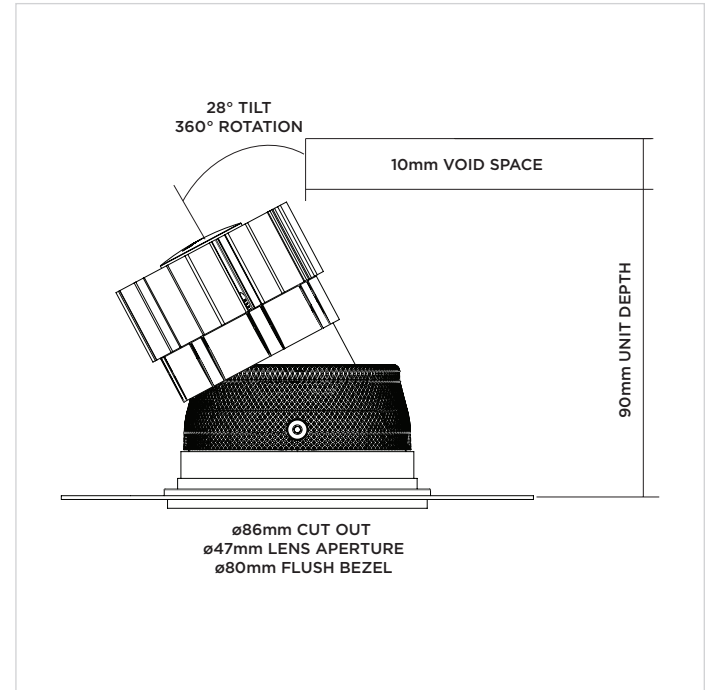
### Luminaire Details

Cut-out	Ø86mm
Recess Depth	100mm
Clearance	Ø250mm
Fixing Method	Plaster-in
Min Ceiling Thickness	5mm
Max Ceiling Thickness	28mm
Max Driver Distance	20m
Class	III
IP Rating	IP54
IP Zone	Zone 1
Material	Aluminium ADC12
Cable type	2 Core 0.75mm <sup>2</sup>
Cable Length	300mm
Bezel Temp	F Rated



### How to Install

- Cut hole in ceiling as per above cut-out, then screw plaster-in carrier to ceiling, plastering up to carrier lip;
- Wire luminaire cable to Orzluna certified driver, ensuring correct polarity (red to positive terminal [+]) and black to negative terminal [-]);
- With mains supply switched off, connect driver to mains supply (to avoid damaging the luminaire, do not hot-wire);
- Feed luminaire into cut-out, ensuring Ø250mm around luminaire and driver is left clear of insulation.



10/07/18

**ORLUNA®**

Installation Instructions