

DETAIL MINI SQUARE LOPRO

ORLUNA®

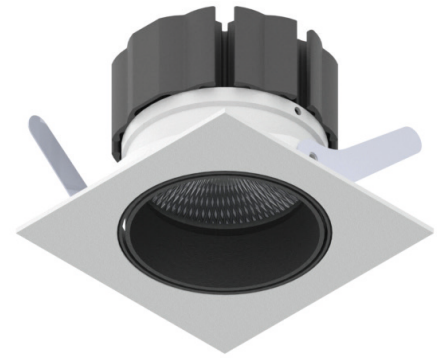
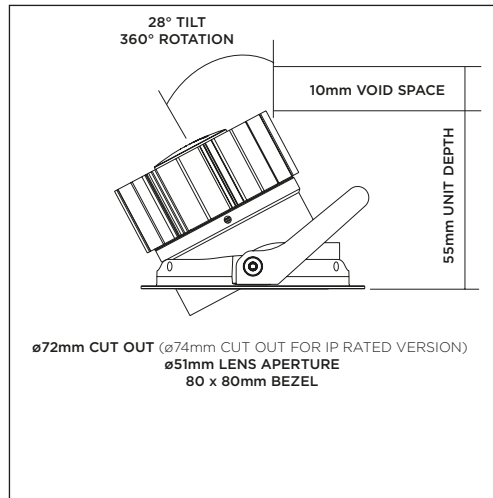
Tilt & Rotate

Project Reference: _____

Product Reference: _____

Luminaire Details

Fitting Type	Adjustable Downlight
IP Rating	IP54 / IP65
Warranty	5 Years
Class	III
IP Zone	Zone 1
Standards	CE, BS EN 60598
Material	Aluminium ADC12
Cable type	2 Core 0.75mm ²
Cable Length	300mm
Bezel Temp	F Rated



Features & Benefits

- 98CRI R9 99
- Ultra low profile
- Low glare
- Change accessories from the front
- 28° Tilt with 360° rotation

2700K LOPRO 98CRI

3000K LOPRO 98CRI

LIGHT VALUES	2700K			3000K		
	NARROW	MEDIUM	WIDE	NARROW	MEDIUM	WIDE
Beam Width FWHM	18°	21°	35°	18°	21°	35°
Initial Lumens*	1055	1055	1055	1057	1057	1057
Engine Lumens*	791	799	814	827	813	832
<small>*(Tc 85°C, +/-7%)</small>						
Engine Lm/W	68	69	70	71	70	72
Luminaire Cd	3992	3170	1266	4027	3307	1296
Binning SDCM (Hot)	2			2		
DUV	0.001			0.001		
CRI (typ)(R9)	98 (98)			98 (99)		
TM30 Rf Rg	Rf 94 Rg 100			Rf 94 Rg 101		
Lifetime (ambient)	L90 B5 50,000hrs			L90 B5 50,000hrs		

For full test data, see Luminaire Photometric Reports at orluna.com/downloads

LUMINAIRE POWER

Voltage	34v	34v
Drive Current	300mA	300mA
Circuit Power (typ)	11.6W	11.6W

DRIVER

Protocols	Mains Dim / DALI / 0-10V / Non-dim
Dim to Dark	0.1% Lux
Distance from product	20m (series wiring)
Emergency	Emergency packs available

Specification Code

Engine type	Bezel	Colour Temp	Driver	Beam Width	Bezel Colour	Baffle Colour	Options
LO	-DMSR-	27	M	N	-W-	BB	F 54 E
		27 / 2700K 30 / 3000K 40 / 4000K	M / Mains Dim D / DALI O / 0-10v N / Non Dim X / No Driver	N / Narrow M / Medium W / Wide	W / White RAL 9010 D / White RAL 9003 E / White RAL 9016 B / Black RAL 9005 F / Antique Brass G / Polished Brass J / Antique Bronze K / Brushed Chrome L / Polished Chrome H / Antique Copper I / Polished Copper C / Other RAL	BB / Black WB / White RAL 9010 GB / Gold CB / Other RAL	F / Fire Rated 54 / IP54 65 / IP65 P / Sea & Spa C / Constant Torsion T / Lockable Tilt & Rotate E / 3hr Emergency H / Honeycomb S / Spreader Lens N / Frosted Lens Z / LSZH Cable

ORLUNA LED Technologies
Unit C, Holly Industrial Park,
Ryan Way, Watford
Herts WD24 4YP

info@orluna.com

+44 (0) 1923 889 712

09/15/17